

# HOW CAN YOU DO YOUR BIT TO MAKE IT SAFER OUTSIDE THE SCHOOL GATES?



## Our little Pedestrians Get Priority



### You can help by

- ✓ Keep your speed LOW
- ✓ Checking for pedestrians & cyclists before you or your child opens the car door
- ✓ Park in designated spaces
- ✓ Set a good example for your child
- ✓ Park further away from the School & walk to reduce congestion

### Please Do Not

- ✗ Leave children out in the middle of the road
- ✗ Block the entrance, parking or designated emergency access area (yellow lines)
- ✗ Park on footpaths or yellow lines
- ✗ Park in the BUS ONLY space
- ✗ Leave your engine running or idling (wastes fuel and emits CO<sub>2</sub> gas causing climate change)

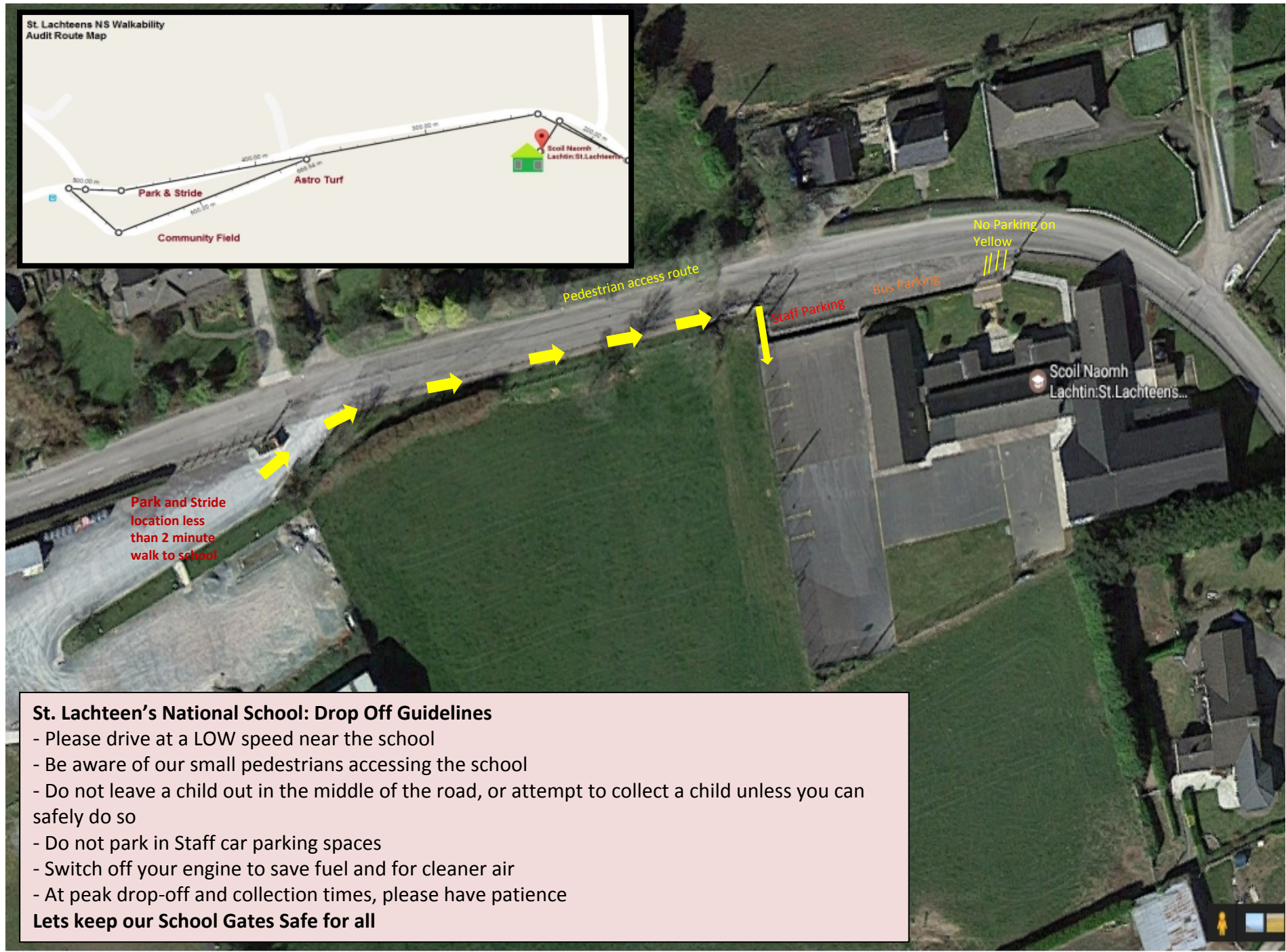
### Have you thought about?

- ! The health benefits of walking or cycling one or more days a week?
- ! Car pooling or Lift Sharing with your neighbours?
- ! Setting up a Walking Bus from a designated location?

Research as shown that children who walk or cycle to school are more receptive to learning at the start of the school day than those who travel to school by car.



**St. Lachteens NS Walkability  
Audit Route Map**



**St. Lachteen's National School: Drop Off Guidelines**

- Please drive at a LOW speed near the school
- Be aware of our small pedestrians accessing the school
- Do not leave a child out in the middle of the road, or attempt to collect a child unless you can safely do so
- Do not park in Staff car parking spaces
- Switch off your engine to save fuel and for cleaner air
- At peak drop-off and collection times, please have patience

**Lets keep our School Gates Safe for all**